

# Volcano

Designed by Cindy Kendrick

## Full Stitches

X	Type ID	Color
■	DMC 817	Coral Red-VY DK
■	DMC 666	Christmas Red-BRT
■	DMC 321	Christmas Red
■	DMC 815	Garnet-MD
■	DMC 814	Garnet-DK
■	DMC 154	Grape-VY DK
■	DMC 307	Lemon
■	DMC 726	Topaz-LT
■	DMC 742	Tangerine-LT
■	DMC 741	Tangerine-MD
■	DMC 740	Tangerine
■	DMC 972	Canary-DK
■	DMC 971	Pumpkin
■	DMC 946	Burnt Orange-MD
■	DMC 606	Bright Orange-Red

Fabric:

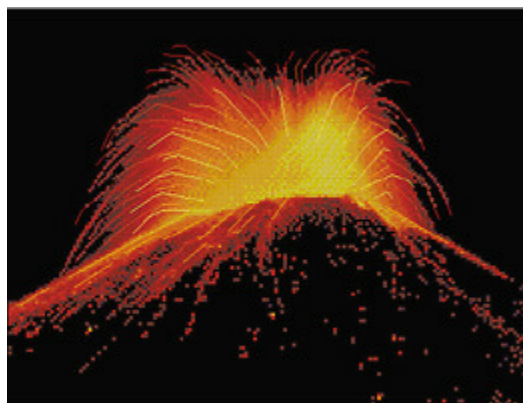
Aida Black 18-count

Finished Size:

10w X 7-1/2h in

Stitches Used:

179w X 123h



## Straight Stitches

Str	Type ID	Color
■	DMC 666	Christmas Red-BRT
■	DMC 726	Topaz-LT
■	DMC 741	Tangerine-MD
■	DMC 972	Canary-DK
■	DMC 946	Burnt Orange-MD

Full Stitches:

Use 2 strands of floss with either 1 strand of a goldish blending filament or 1 strand of gold thread

Straight Stitches:

Use 2 strands of floss with either 1 strand of a goldish blending filament or 1 strand of gold thread

For more patterns visit

<http://oceanbreeze.net>

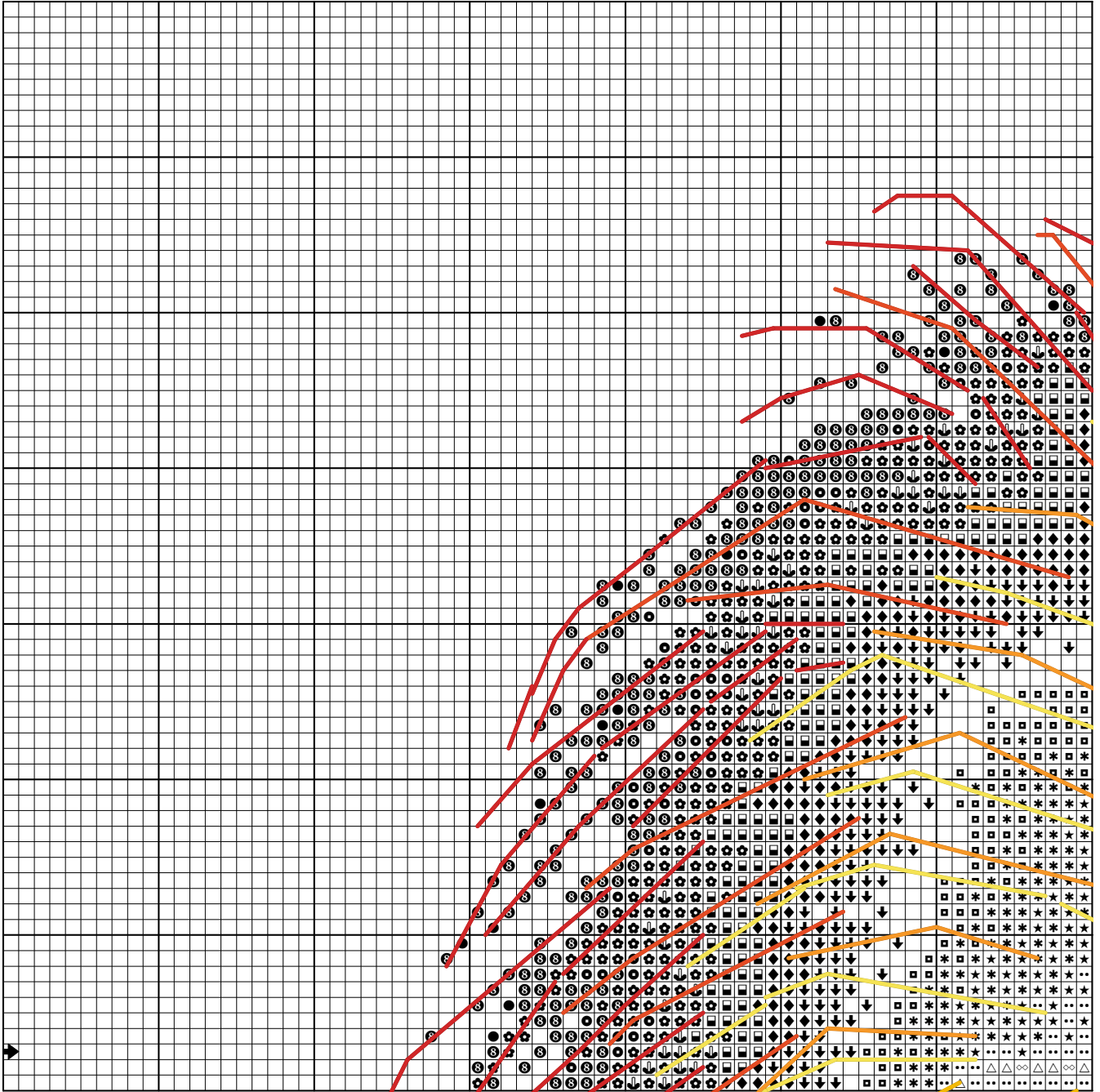
OceanBreeze Cross-Stitch

<http://oceanbreeze.net>

Copyright 2008

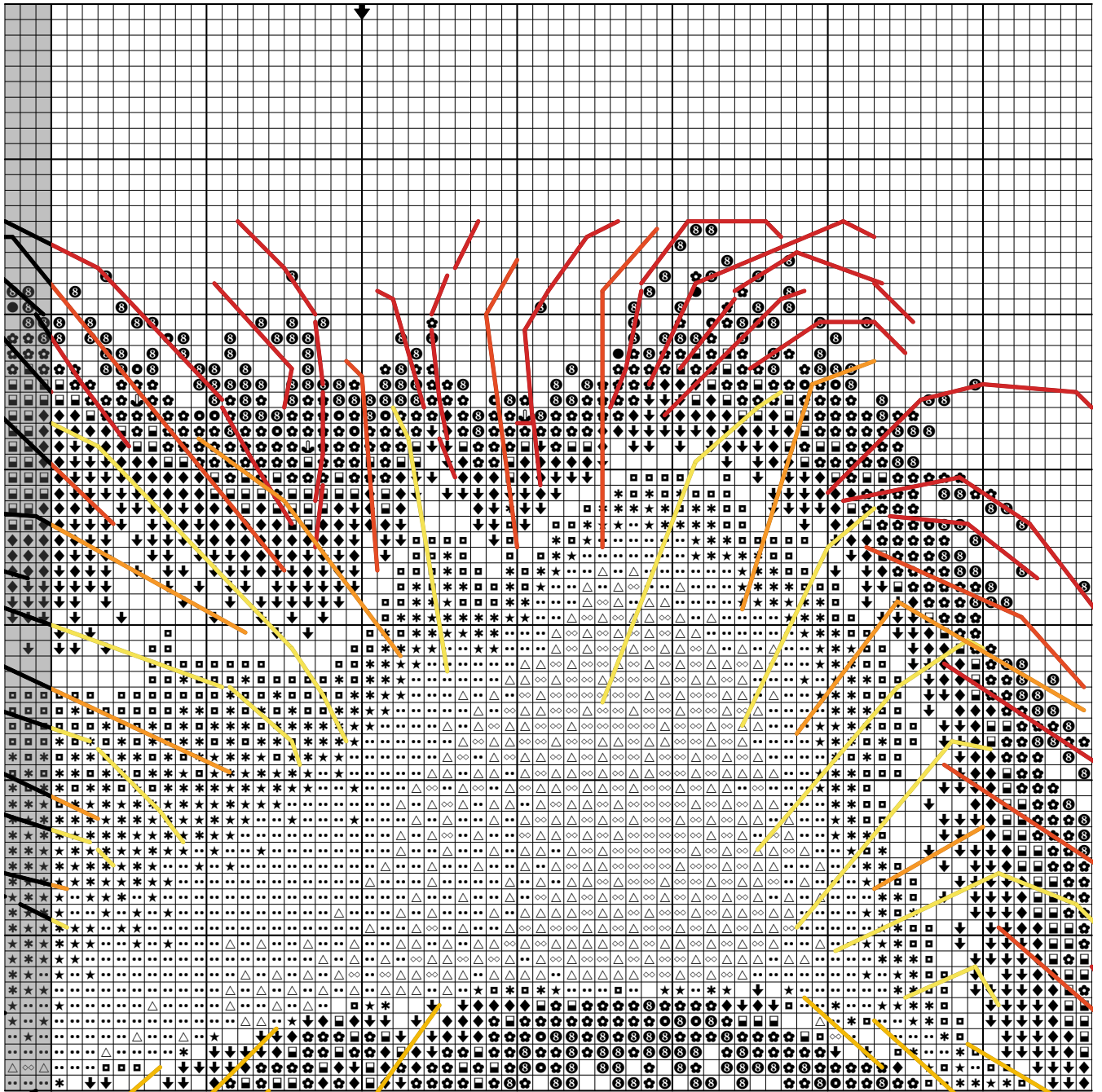
# Volcano

Designed by Cindy Kendrick



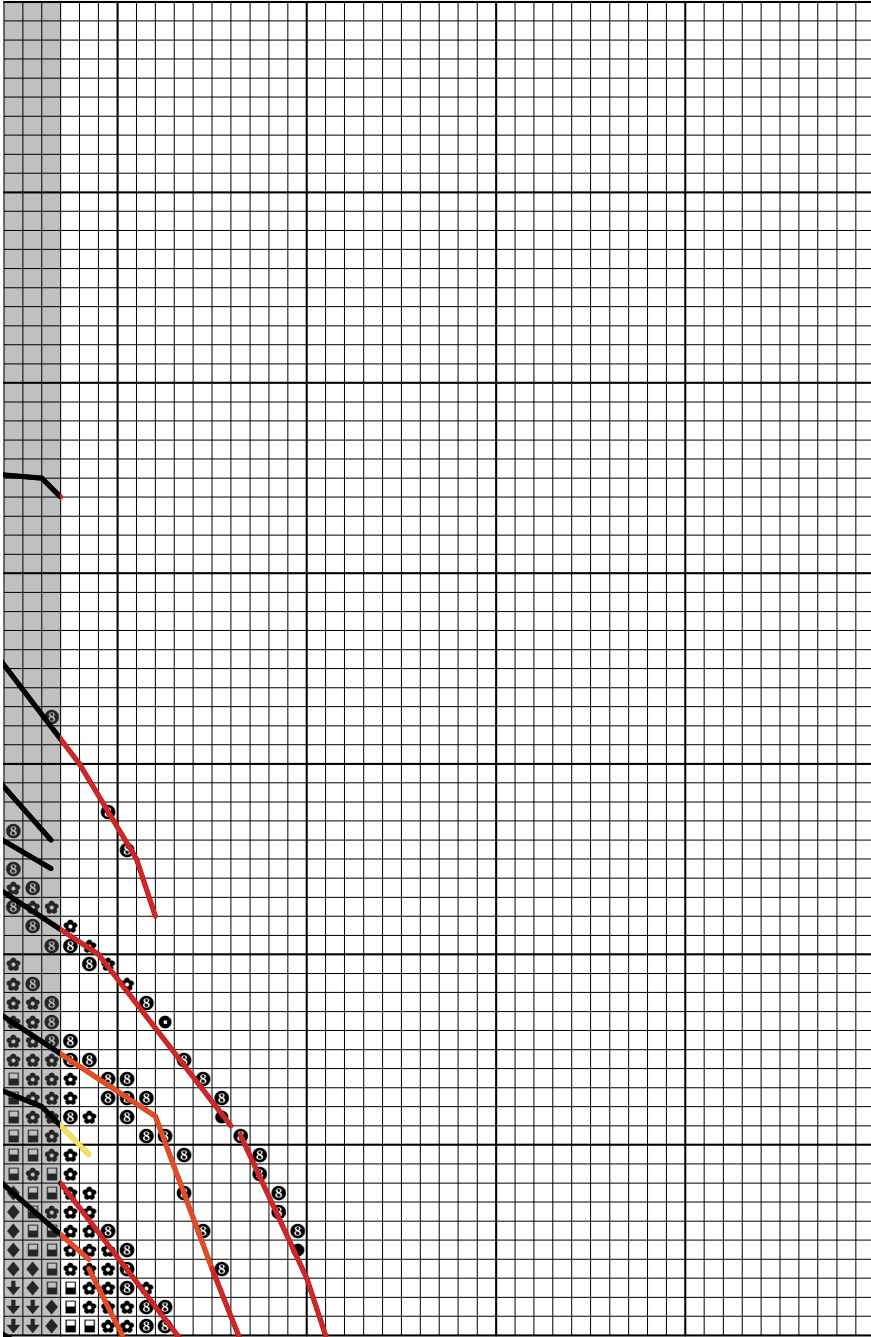
# Volcano

Designed by Cindy Kendrick



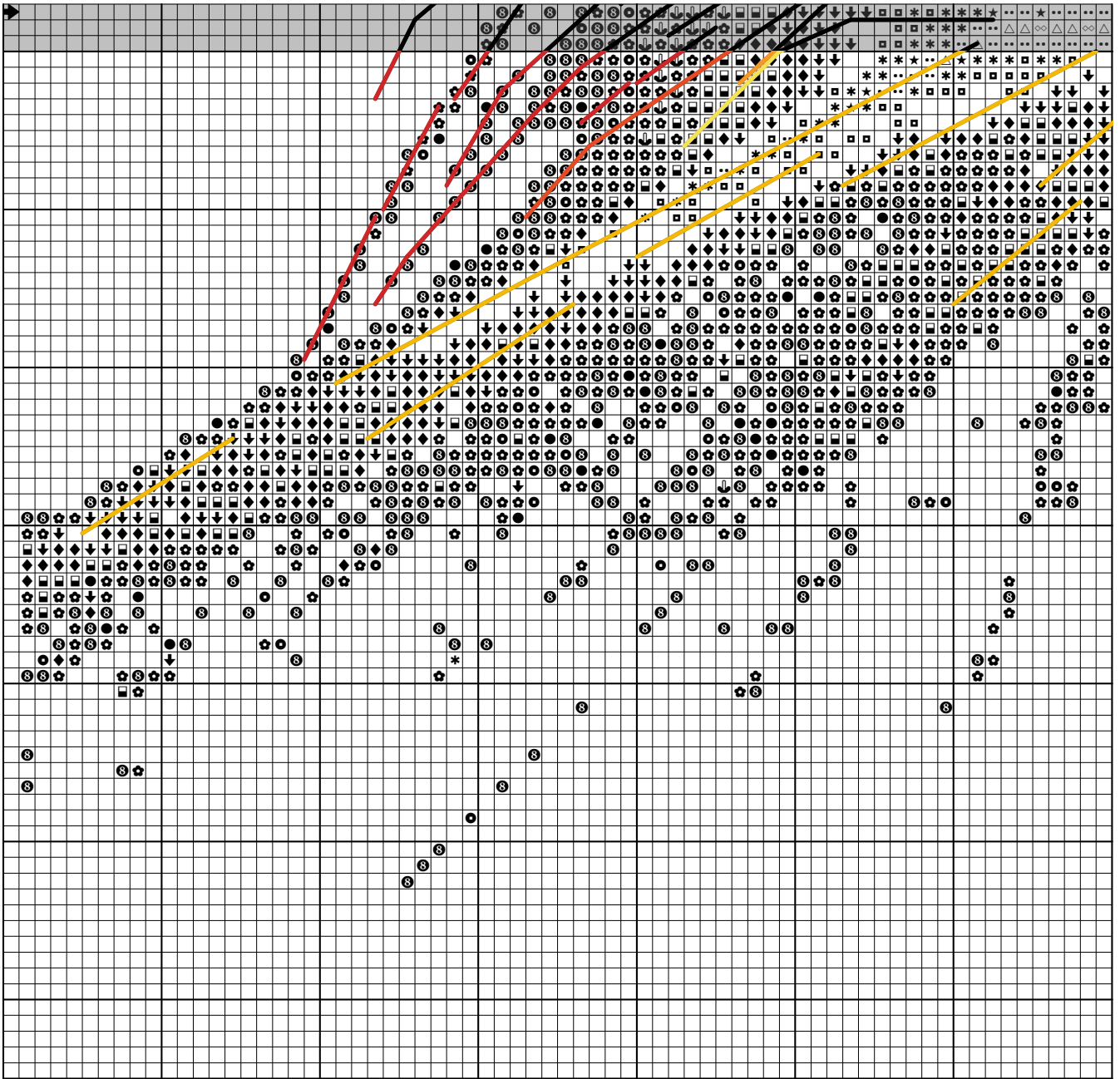
# Volcano

Designed by Cindy Kendrick



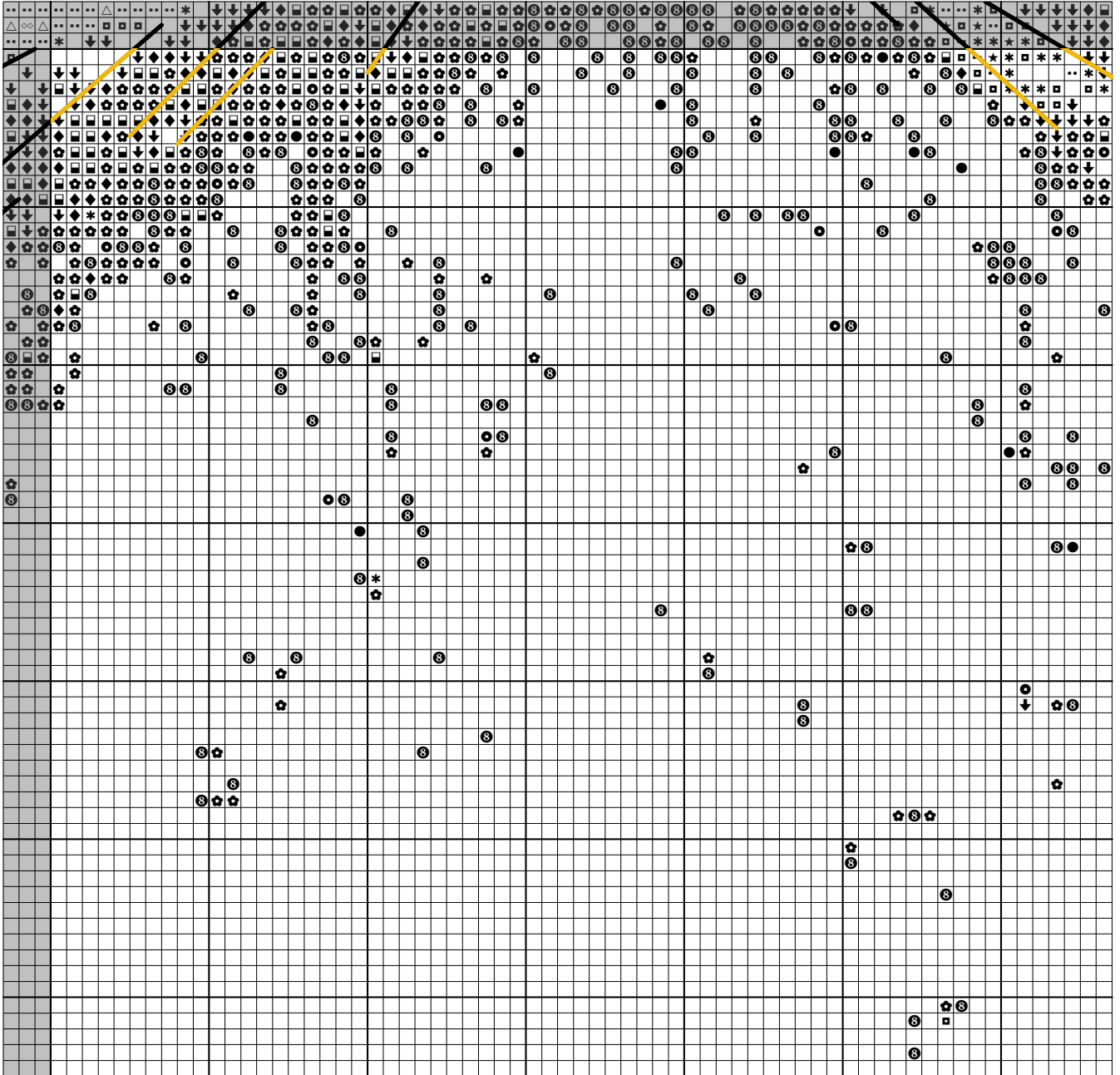
# Volcano

Designed by Cindy Kendrick



# Volcano

Designed by Cindy Kendrick



# Volcano

Designed by Cindy Kendrick

